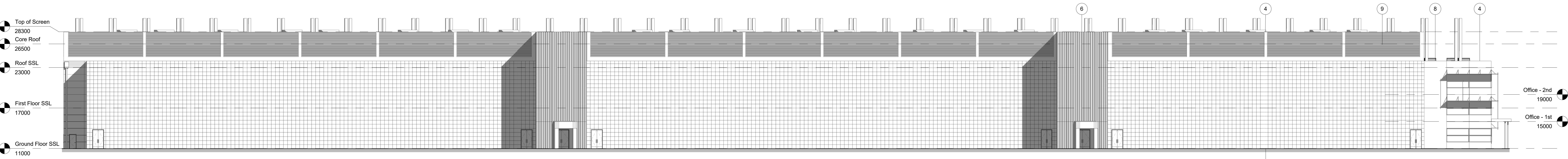
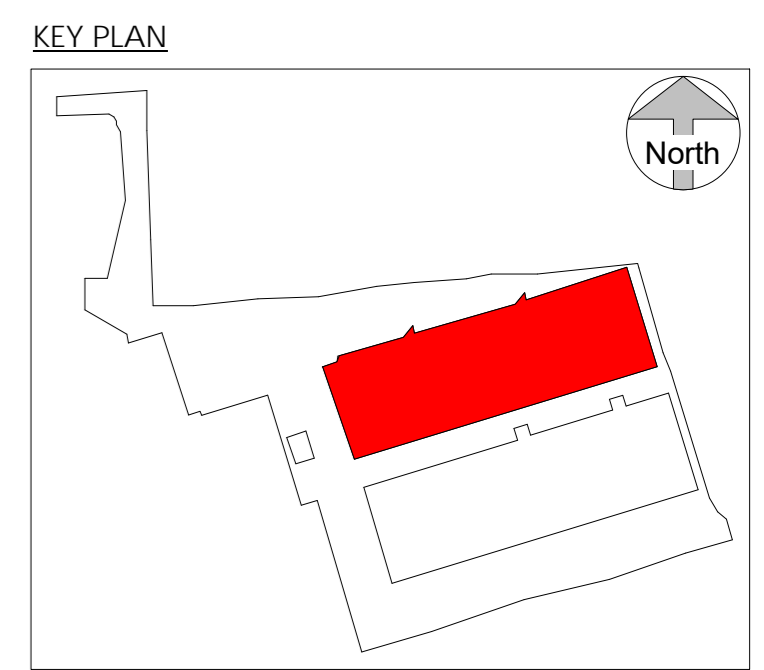
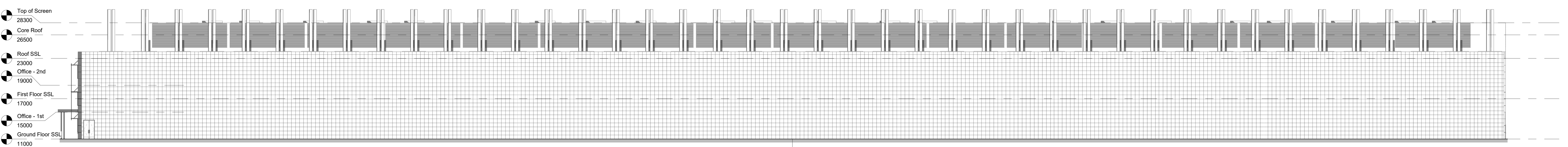


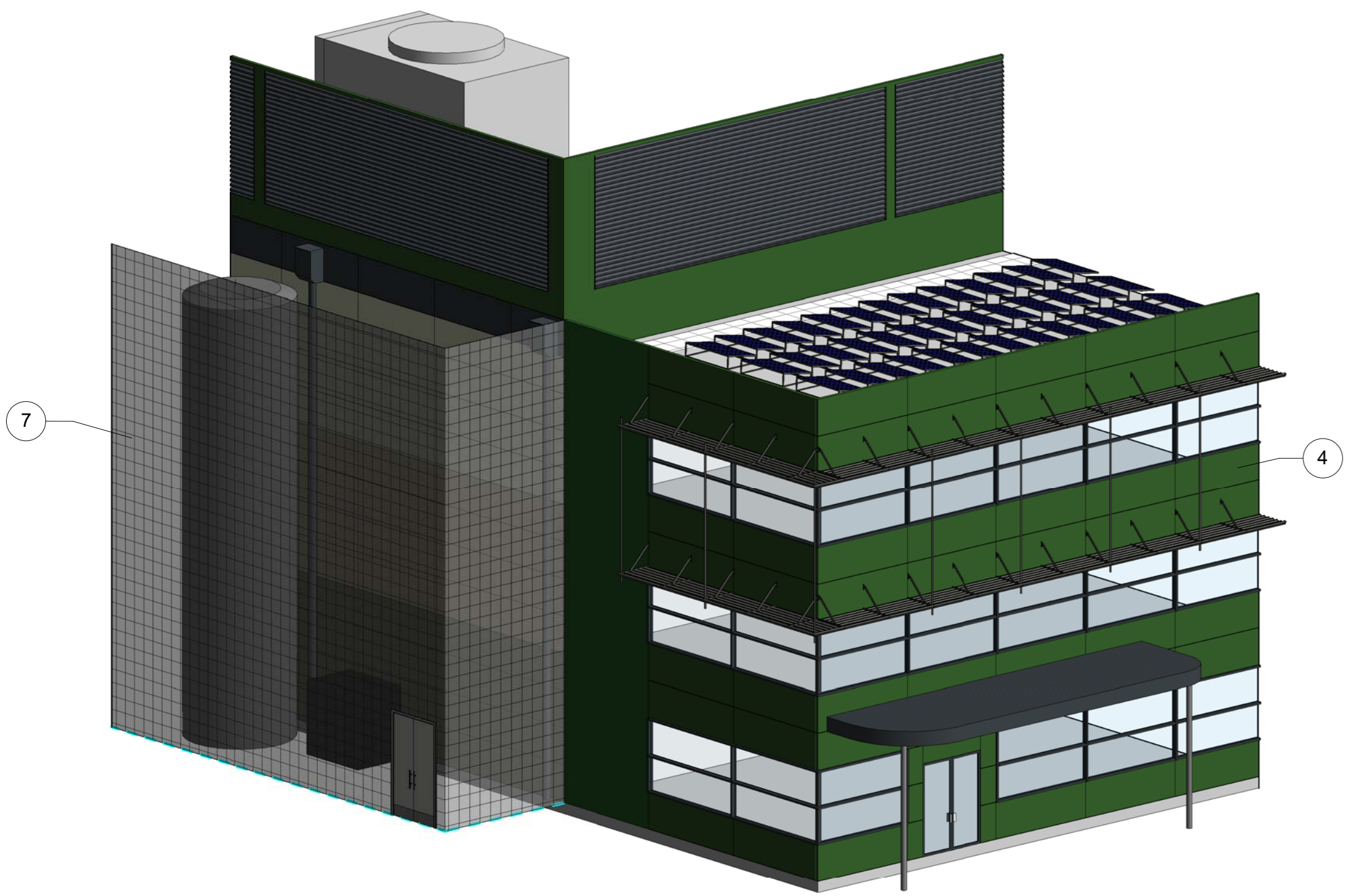
NOTES:  
 1. All dimensions are in millimetres unless otherwise stated.  
 2. All dimensions are to the face of the work unless otherwise stated.  
 3. The drawing shall be read in conjunction with all specifications and schedules.  
 4. All dimensions are to be checked on site for accuracy.  
 5. The contractor shall be responsible for the provision and the protection of all services, including, but not limited to, water, gas, electricity, and other services.  
 6. Dimensions shall be checked on site for accuracy and the contractor shall be responsible for providing all dimensions and levels on site for the actual setting out of the works.



1 North  
1 : 200



2 South  
1 : 200



3 3D Axonometric Outside Compound

- Materials Legend:
- 1 - Kingspan AWP Flat Cladding Panel Colour - XL Forte Olive Green: RAL 100 30 20, BS 12 827
  - 2 - Kingspan AWP Flat Cladding Panel Colour - XL Forte Khaki Green: RAL 100 60 20, BS 12 827
  - 3 - Kingspan AWP Flat Cladding Panel Colour - XL Forte Willow Green: RAL 100 80 20, BS 12 827
  - 4 - Kingspan AWP Flat Cladding Panel Colour - XL Forte Leaf Green: RAL 6002
  - 5 - Kingspan AWP Micro-Ribs Cladding Panel Colour Onyx: RAL 7016
  - 6 - Kingspan Tripartite Panel Colour - XL Forte Leaf Green: RAL 6002
  - 7 - Benchmark Hook on Cassette Mesh Panel Colour Onyx: RAL 7016
  - 8 - Biotechture External Living Wall
  - 9 - Metal Louver screen Colour Onyx: RAL 7016
  - 10 - Door Frame Colour Onyx: RAL 7016
  - 11 - Window Frame Colour Onyx: RAL 7016
  - 12 - Brise Soleil Colour Onyx: RAL 7016

APPROVED	DATE	REVISIONS	NO.	DATE	BY

**FOR PLANNING**

**ARC:MC**

MISSION CRITICAL

140-142 St. John Street, London EC1V 4JB    020 34112931

REGISTERED IN ENGLAND COMPANY REG. NO. 2082249