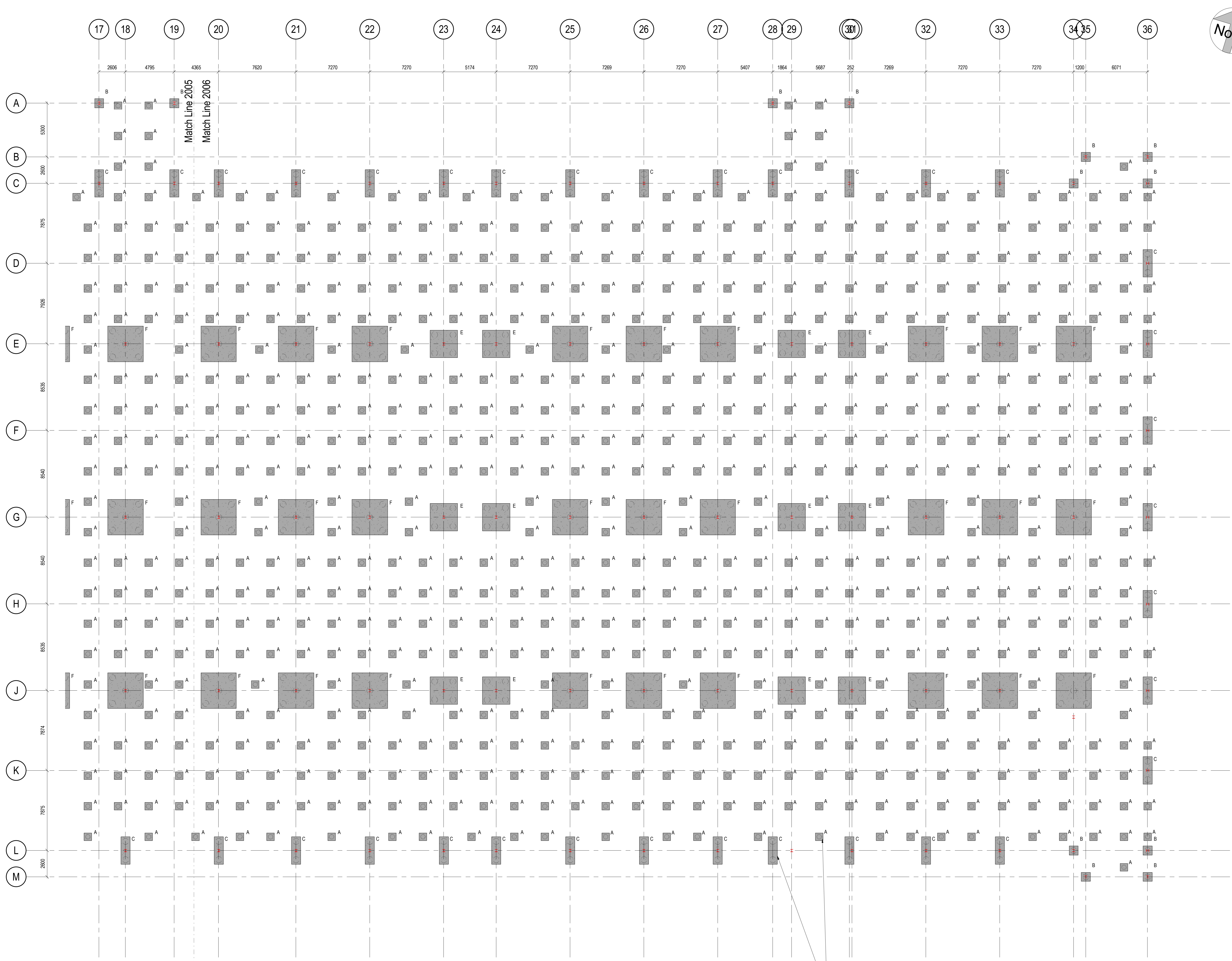


This drawing is copyright and owned by Capita, and is for use on this site only unless contractually stated otherwise.  
 DO NOT SCALE this drawing (printed or electronic versions). Contractors must check all dimensions from site.  
 All other design team elements, where indicated, have been imported from the consultant's drawings and reference should be made to the individual consultant's drawings for exact setting out, size and type of component.  
 Discrepancies and / or ambiguities within this drawing, between it and information given elsewhere, must be reported immediately to the architect for clarification before proceeding.  
 All works are to be carried out in accordance with the latest British Standards and Codes of Practice unless specifically directed otherwise in the specification.  
 All setting out to be in accordance with the Architect's Details. (The Architect's drawings take precedence over any setting out shown on this drawing).  
**SAFETY, HEALTH AND ENVIRONMENTAL INFORMATION**  
 Refer to the relevant Construction (Design and Management) documentation where applicable.  
 It is assumed that all works on this drawing will be carried out by a competent contractor, working where appropriate to an approved method statement.

**NOTE: All piles to be continuous flight auger (CFA) type with a termination depth to ensure at least 5m of low permeability London Clay remaining below pile base.**



**FOUNDATION LAYOUT PLAN - East**  
 1 : 150

Rev	Date	By	Description	Rev Check

Drawing Status  
**PRELIMINARY**

Client  
**NTT COMMUNICATIONS CORPORATION**

Project  
**NTT COMMUNICATIONS CORPORATION DATA CENTRE BUILDING 2**

Drawing  
**FOUNDATION LAYOUT PLAN SHEET 2**

Scale @ A0	Drawn	Checked						
1 : 150	BMG	JDW						
Project No.	Date	Office						
CS/094261	12.01.18	WATFORD						
Drawing Identifier	project	origin	zone	level	file type	role	number	revision
PHW	CA	B2	B1	DR	S		2006	P00